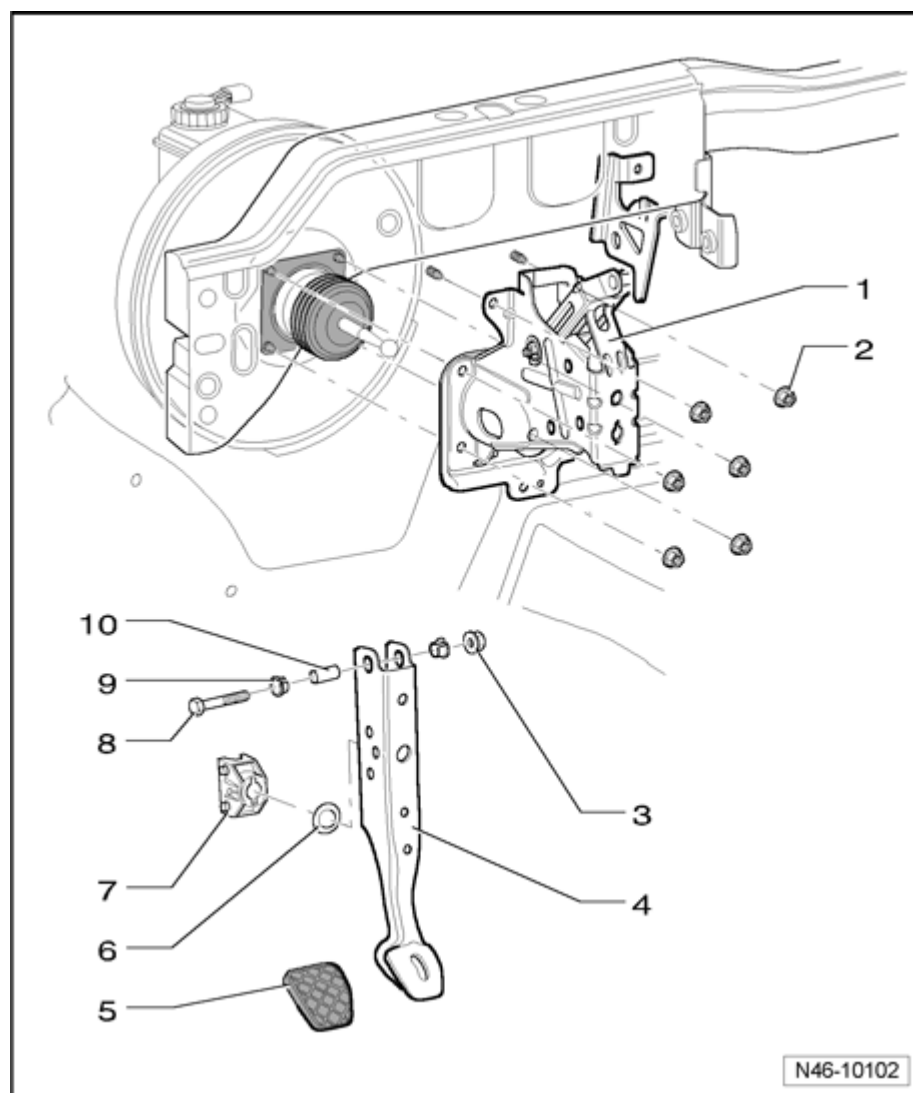


Brake pedal, assembly overview

Warning!

The path of the brake pedal must not be shortened via extra floor mats.

Before installing, lubricate all mounting points with grease, part no. G 000 602.

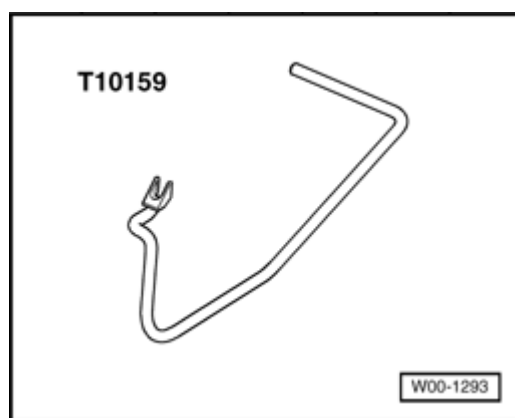


- **Mounting bracket**
- **Self-locking hex nut, 25 Nm**
- **Self-locking hex nut, 25 Nm**
- **Brake pedal**
 - Clip brake pedal to push rod for brake booster ⇒ [Topic 46-4](#)

- **Cover**
- **Ball socket**
- **Wheel hub support**
 - For ball head of brake servo push rod
- **Hex head bolt**
- **Bushing**
- **Pivot pin**

Brake pedal from brake booster, separating

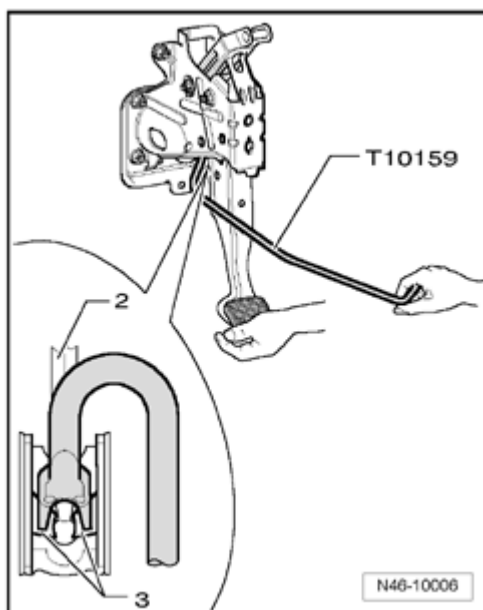
Special tools, testers and auxiliary items required



- Release tool T10159

- Remove trim on drivers side

⇒ [Repair Manual, Body Interior, Repair Group 70,](#)



- First press brake pedal in direction of brake booster and hold.

2 - Pressure rod

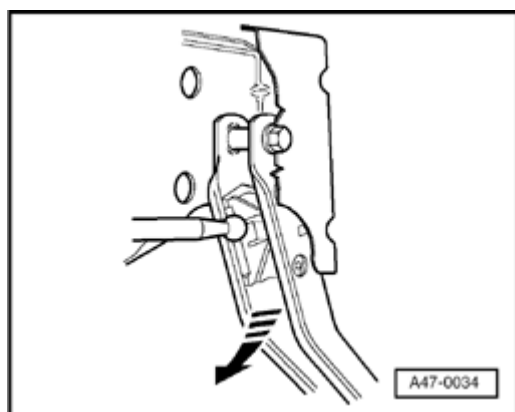
3 - Retaining lugs

- Insert release tool T10159 and pull in direction of driver seat. When doing this, counter-hold on brake pedal. (At this moment the pedal must not be allowed to move backward). The mounting retaining lugs - 3 - will thereby be pressed off the ball head of the push rod - 2 - .

For ease of illustration separating brake pedal from brake booster is shown with pedal cluster removed.

- Pull release tool T10159 and brake pedal together toward the driver seat. (The brake pedal will thereby be pulled off ball head of the push rod).

Joining brake pedal to brake booster



- Hold ball head of push rod in front of mounting and push

brake pedal in direction of brake booster, so the ball head engages audibly.

Further installation is in reverse order of removal.